

©2011 HowardCenter, Inc., Burlington, Vermont  
This publication was partially funded by the Office of Safe and Drug Free Schools (OSDFS) at the US Department of Education (ED). The content does not necessarily reflect the views of or imply endorsement by OSDFS nor ED. HowardCenter, Inc. maintains full copyright of these materials. Only those parties purchasing materials directly from HowardCenter, Inc. may make adaptations specific to local information and resources. Changes to any other content may not be made without the express written permission of HowardCenter, Inc. These materials may be reproduced and distributed freely throughout Greene County, Ohio so long as there is no charge to users/recipients.

**Greene ESC Mental Health Services**  
**360 E Enon Rd Yellow Springs OH 45387**  
**[www.greeneesc.org](http://www.greeneesc.org)**  
**(937) 767-1303 ext 106**



*An Information Booklet*  
*For Greene County Families and Educators*



# CHILDREN & MENTAL HEALTH



## What is mental health?

Everyone has mental health. Mental health is how we think, feel and act as we face the daily ups and downs of our lives. Our mental health helps determine how we cope with stress and change, make choices and decisions, and relate with other people.



All people feel sad, angry, worried, and out of control at times. This is a normal part of life. Sometimes, however, a person's thoughts, feelings, or behavior become too hard for them to manage and get in the way of their ability to cope with the every day demands of home, school, and/or relationships. This may be a sign of an emerging mental health concern. Mental health problems can affect people of any age, from early childhood throughout the life cycle.

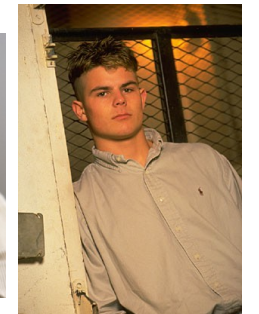
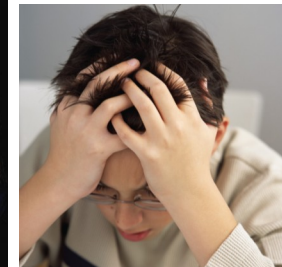
***Mental health problems in children and adolescents are more common than most people think. In the United States it is estimated that one in five children and adolescents has some mental health related issue.***



## Help is available

To find mental health and related supports, you may:

- Call your child's physician or school counselor for names of local mental health providers
- School-based counseling services are available through Greene ESC Mental Health Services. For more information, contact your school counselor or call 937-767-1303, ext 106.
- Outpatient counseling services are available through Family Solutions Center (TCN). For more information, call 937-427-3837
- For linkage to family support services, contact Greene County Family and Children First at 937-562-5600 or Mental Health and Recovery Board at 937-322-0648



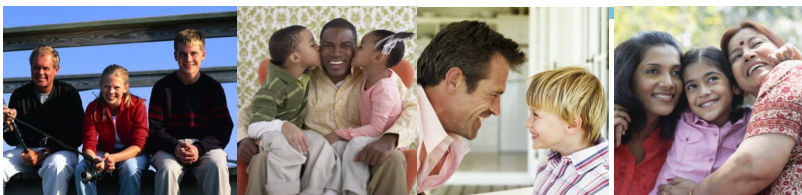


*Getting the right support for your child is not always easy. Despite the challenges you may face, getting help for mental health issues is really important!*



Did you know:

- Health Insurance may cover the cost of child and/or family mental health services.
- Many mental health providers will adjust their fees based on a family's ability to pay.
- Greene ESC Mental Health Services provides mental health counseling in all schools in Greene County.
- Interpreters are available for families who do not speak English.



## Some warning signs

Though mental health problems are not always easy to see in children and adolescents, there are some signs and symptoms you can be on the lookout for.

Thinking

- Persistent nightmares
- Unusual thoughts or beliefs
- Thoughts that race too fast
- Poor concentration
- Inability to focus attention
- Hearing of voices that cannot be explained
- Suicidal thoughts

Feelings

- Feelings of sadness or hopelessness
- Angry feelings
- Anxious or worried feelings
- Extreme fear
- Sense of worthlessness and guilt
- Sense of agitation and uneasiness
- Feelings that life is too hard or has no meaning

It is important to note that many of these signs and symptoms **may occur as part of a child and/or adolescent's normal development.** If you are not certain if you should seek help for your child, contact your child's healthcare provider or school counselor for guidance.

Behavior

- Decrease in school performance
- Loss of interest or effort in things he or she usually enjoys
- Unexplained changes in sleeping, and/or eating habits
- Frequent crying and overreaction to small things
- Avoidance of friends or family
- Hyperactivity or frequent fidgeting
- Frequent breaking of rules and/or getting in trouble with the law
- Use of alcohol or other drugs
- Threats of hurting him or herself or other people
- Lack of remorse or guilt when others are hurt
- Dangerous or life threatening actions
- Cruelty to animals
- Fire setting



## What causes mental health problems?

The causes of mental health problems are complicated and not yet fully understood. It is known, however, that mental health issues may come from a combination of different factors including a person's biology (e.g. genetics, chemical imbalances in the body) and from environmental factors (e.g. stressful or harmful experiences, exposure to harmful chemicals.)

*Whatever the cause, a person with a mental health issue is not to blame for their difficulties. They cannot "just stop" the problem when they want to.*



## Getting help early is important

Without the right help, children and adolescents with mental health issues are at a higher risk to develop other difficulties, such as school failure or drop-out, problematic behavior, and even suicide. Identifying problems early and getting appropriate treatment can help children reach their full potential and may prevent more significant problems from developing. Getting help early is important!

## Where do I go to get mental health support?

There are many places you can go to get assistance with and/or advice about the mental health of your child. Talking with your child's pediatrician or school counselor is a good place to start. You may also talk with a therapist whose job it is to understand and provide support with mental health issues. If you are not sure where to start, ask someone you trust- perhaps a friend or family member, your child's teacher, healthcare provider or a member of the clergy- to help you get connected with the resources your child may need.



## What can I expect?

When you first seek mental health support or advice, you will likely be asked to set up a meeting to discuss your concerns and what changes you have noticed in your child's thinking, feelings, and/or behavior. As a parent, you know your child better than anyone. Because of this, your input is very important in developing the best mental health care plan for your child. You can expect to be included in all decisions regarding your child and the development of their mental health care plan.