

Benchmark Correlation Number, Number Sense and Operations

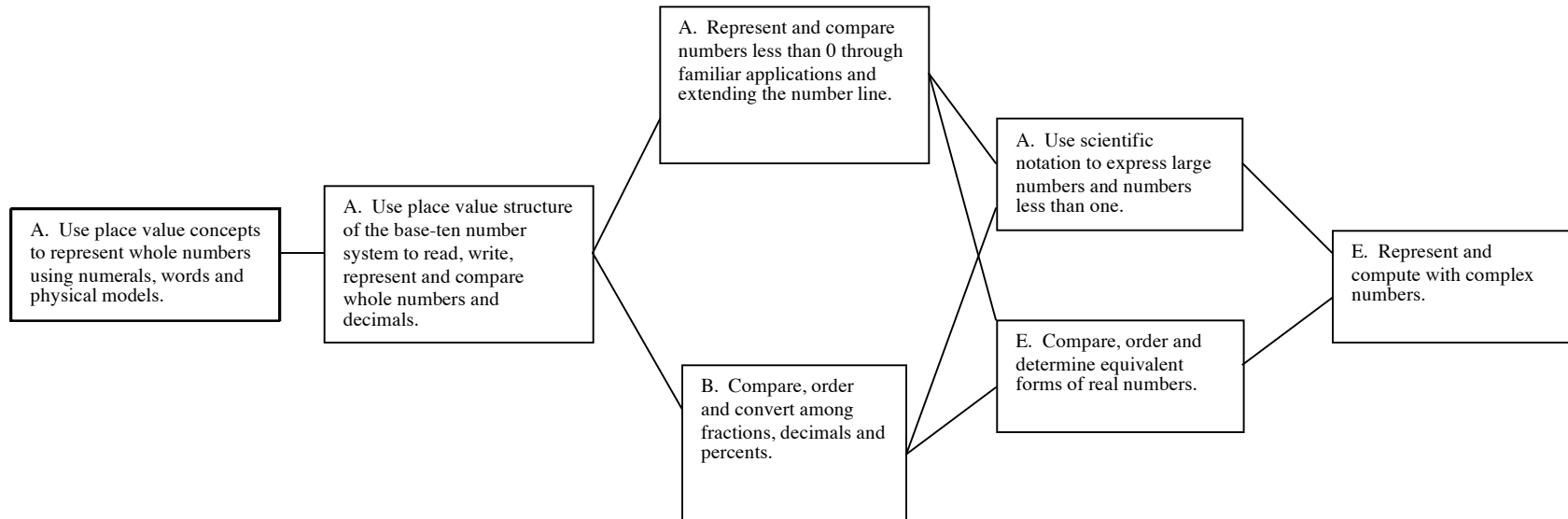
K-2

3-4

5-7

8-10

11-12



**Benchmark Correlation
Number, Number Sense and Operations**

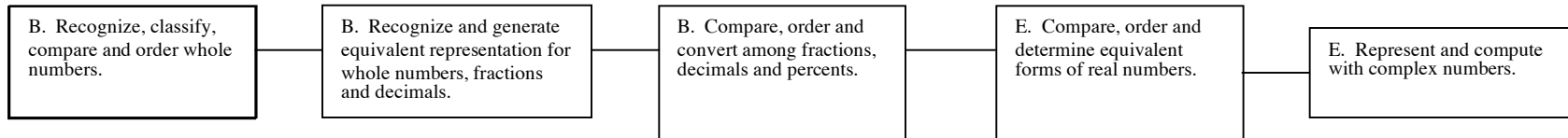
K-2

3-4

5-7

8-10

11-12



Benchmark Correlation Number, Number Sense and Operations

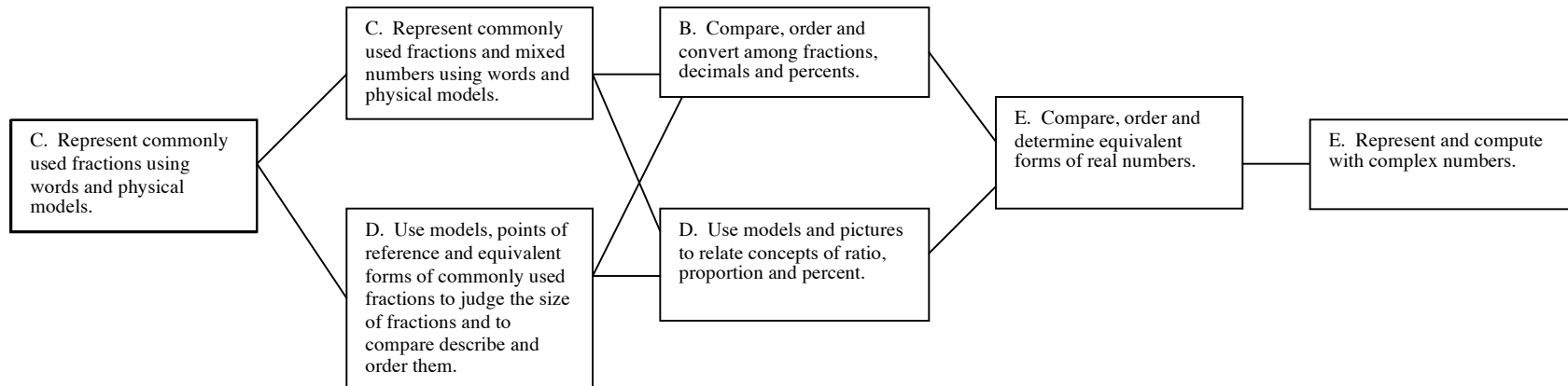
K-2

3-4

5-7

8-10

11-12



Benchmark Correlation Number, Number Sense and Operations

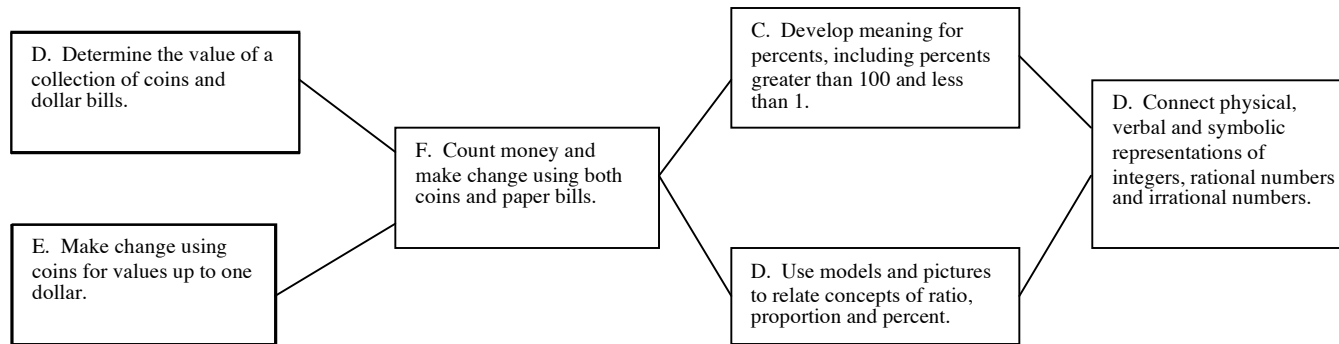
K-2

3-4

5-7

8-10

11-12



Benchmark Correlation
Number, Number Sense and Operations

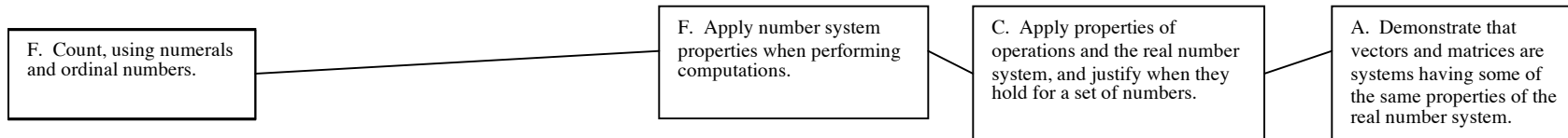
K-2

3-4

5-7

8-10

11-12



Benchmark Correlation Number, Number Sense and Operations

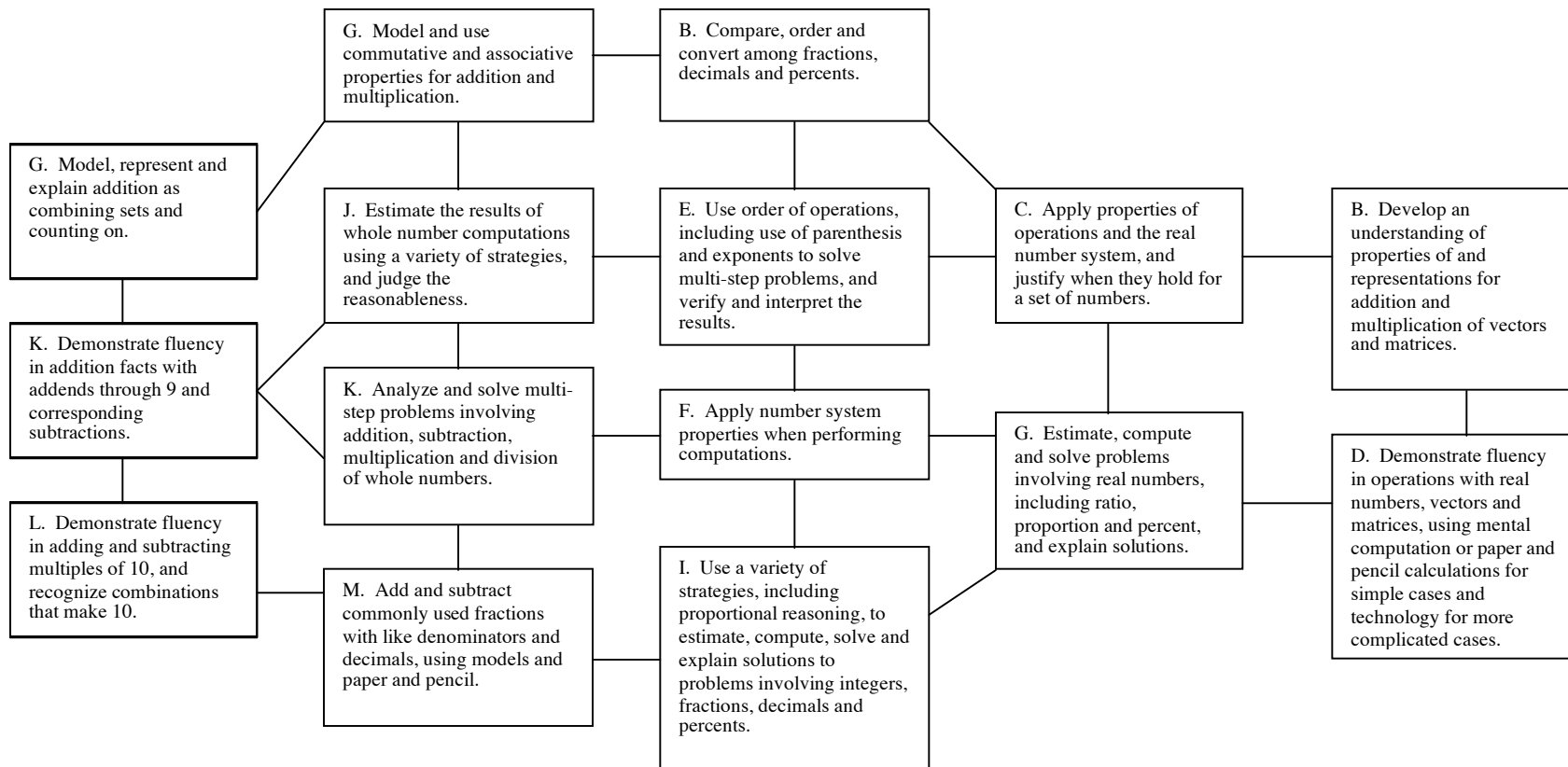
K-2

3-4

5-7

8-10

11-12



Benchmark Correlation Number, Number Sense and Operations

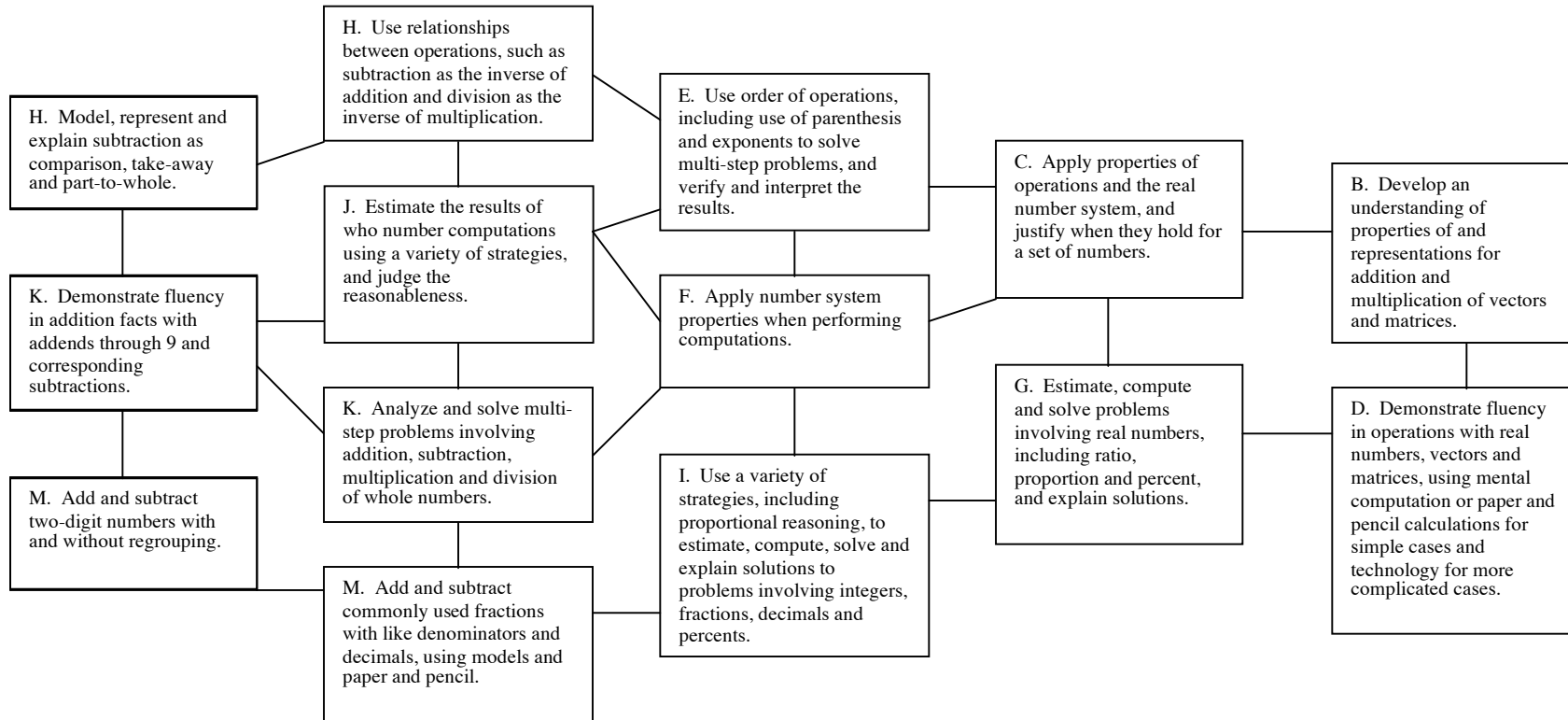
K-2

3-4

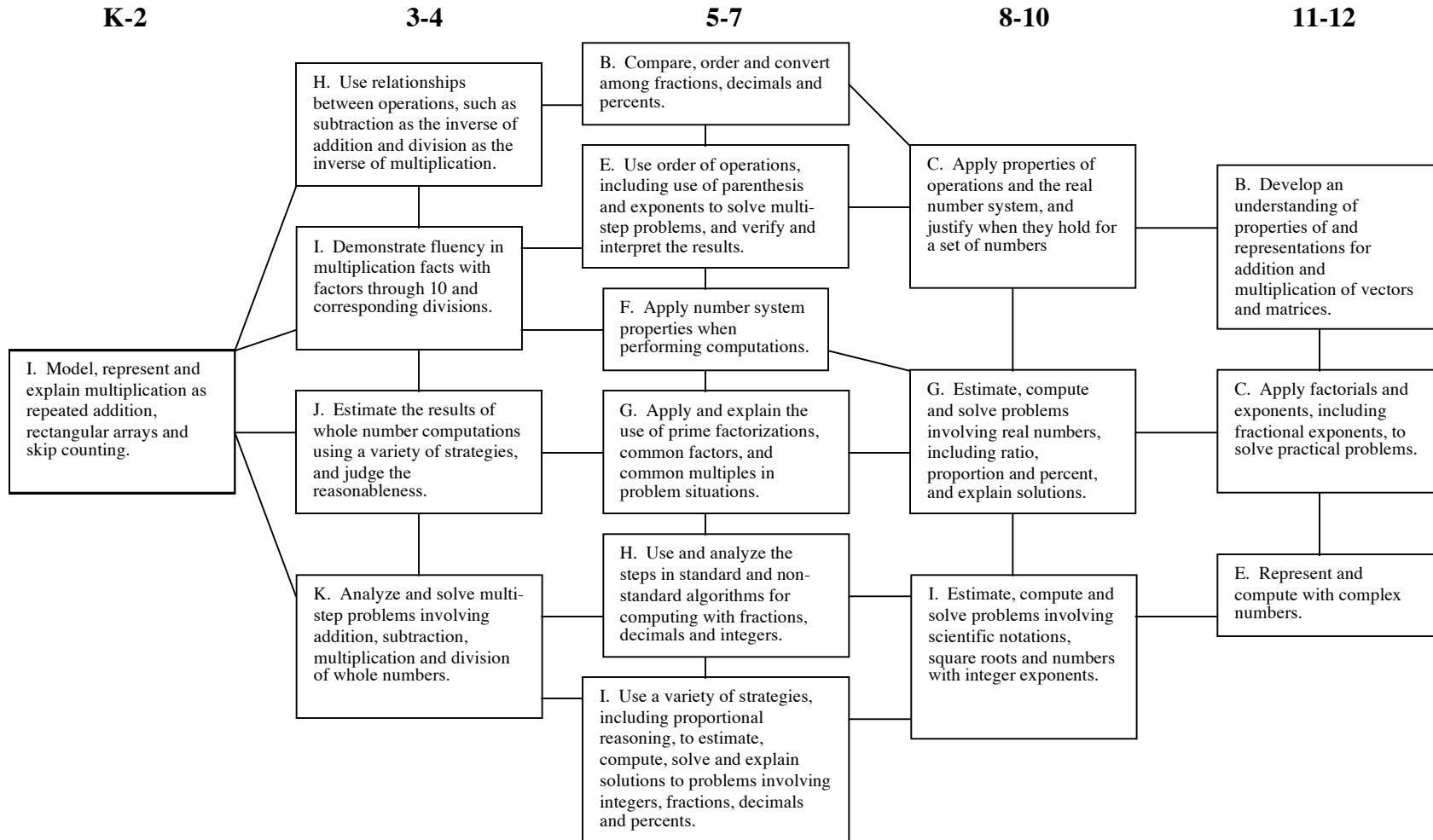
5-7

8-10

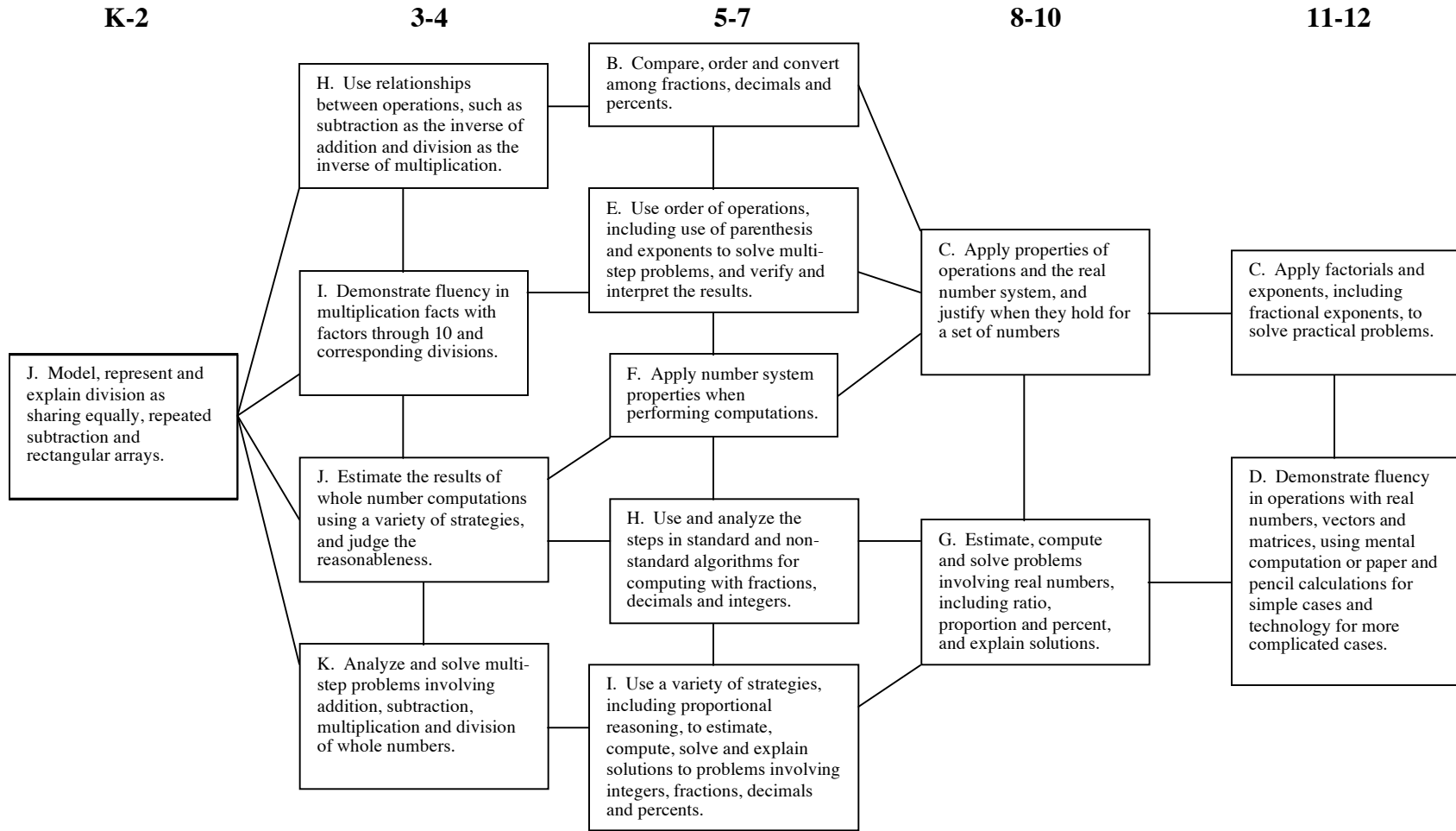
11-12



Benchmark Correlation Number, Number Sense and Operations



Benchmark Correlation Number, Number Sense and Operations



**Benchmark Correlation
Number, Number Sense and Operations**

K-2

3-4

5-7

8-10

11-12

E. Recognize and classify numbers as prime or composite and list factors.

G. Apply and explain the use of prime factorizations, common factors, and common multiples in problem situations.

**Benchmark Correlation
Number, Number Sense and Operations**

K-2

3-4

5-7

8-10

11-12

L. Use a variety of methods and appropriate tools (mental math, paper and pencil, calculators) for computing with whole numbers.